

AMENDMENT OF SOLICITATION/CONTRACT (AGREEMENT)

SECTION I

Instructions to Offerors --- Amendment of Solicitation. The following instructions apply unless specified otherwise in an AAFES letter accompanying this amendment.

a. Offerors must acknowledge receipt of this amendment prior to the hour and date specified for receipt of proposals in the original solicitation, or the hour and date specified in this amendment if such has been amended. Offeror must acknowledge by one of the following means:

(1) By signing and returning all except one copy of this amendment;

(2) By acknowledging receipt of this amendment on each copy of the proposal submitted;

(3) By separate letter or telegram which includes a reference to the solicitation and amendment number.

b. Proposals must be based upon and refer to the solicitation as amended. Unless an acknowledgment of this amendment is received by the Contracting Officer before the hour and date specified for receipt of proposals, Offeror's proposal may be considered nonresponsive.

c. If you desire to revise a proposal previously submitted, such revision must be received prior to the hour and date specified for receipt of proposals inclosed in a sealed envelope addressed to the issuing office, with the name and address of offeror and the solicitation number on the face of the envelope. Telegraphic proposals will not be considered unless authorized by the solicitation; however, proposals may be modified by telegraphic notice provided such notice is received prior to the time set for receipt of proposals. Telegraphic modifications should not reveal the amount of the original or of the revised proposal.

SECTION II

Instructions to Contractor --- Amendment of Contract.

Unless otherwise instructed, all except one copy of this Amendment are to be executed by a person authorized to bind the firm contractually and returned to the Contracting Officer. The effective date will be the date the amendment is signed in block 6 by the Contracting Officer or the date(s) indicated in block 4, whichever is later.

1. QUESTION: Is general contractor required to pull permits for this project, if so under which State or Federal jurisdiction does this project fall?

ANSWER: Site work will require a Notice of Intent to be filed with the St. Johns River Water Management District. A permit application for a permit determination will be required (\$100-\$150). Based on the scope of the project, a permit should not be required. Cost of the permit will not be charged to AAFES. Ref. to par 8 AAFES General Provision Apr. 08.

2. QUESTION: Is general contractor to include all fees for inspections, impact fees, meter fees, utility fees, and water management fees?

ANSWER: No additional fees are expected.

3. QUESTION: Is general contractor to include the costs for builders risk insurance for the duration of the project?

ANSWER: Par. 3 AAFES General Provision Apr. 08

4. QUESTION: Does the 90 day construction schedule include mold remediation?

ANSWER: Yes.

5. QUESTION: Is general contractor required to include costs for materials testing (soil compaction, asphalt, concrete, steel, roofing, etc.)?

ANSWER: Contractor shall consult each section of Project Manual for requirements. Include cost in bid.

6. QUESTION: Are the drive through windows shown on sheet A1.2 to be furnished and installed by the contractor, please advise. If so can you please send specifications and add to the door and window schedule.

ANSWER: Drive-Thru Windows; all items shall be furnished and Installed by the Contractor unless otherwise noted; therefore, yes the Contractor Furnishes and Installs. The Contractor shall furnish the "Ready Access Bump Out 2" Drive-Thru Window as specified which only comes in one dimension. The Window size is on the attached Cut Sheet (Inclosure #1 consisting of 2 pages).

7. QUESTION: Specified aluminum frame does not meet local code requirements. Local code requires wind zone (impact rated) aluminum frame, glass, and door assemblies, please clarify if all products are to meet local or more stringent code? If so, please note combined lead-time for frames and laminated impact glass may affect the 90 day schedule of the project.

ANSWER: Ref. to attached Section 08400 form Project Manual. Performance Requirements were furnished by the Patrick AFB (Inclosure #2 consisting of 2 pages.

8. QUESTION: Plan sheet 6.1, note 1 call for black anodized aluminum doors and frames. Specs call for Kynar 500 finish. Which is correct?

ANSWER: Black anodized finish.

9. QUESTION: Is a door specific hardware schedule for aluminum doors available?

ANSWER: Hardware sets shown on drawings, sheet A6.1, are in addition to the hardware supplied, for normal operations of the door by the storefront supplier.

What the

BEST DRESSED

Drive-thru is Wearing



BUMP OUT 2

The original Ready Access Bump-out window design is recognized throughout the world as the industry standard with more units installed than any other window of its type. By design, this ruggedly constructed unit combines functional superiority and practicality - all in an attractive window that can match virtually any building exterior.

PRODUCT DESCRIPTIONS

- **Large 19"W x 18"H Fold-in Service Opening**
This large service opening is perfect for virtually any size order, from pizza to ribs to beverage cartons.
- **Frame Size**
Standard window dimensions are 27 3/4"W x 48 3/4"H.
- **Panoramic View**
The classic Ready Access Bump-out design promotes visibility and personal contact by offering a three sided, 180 degree view of cars and customers.
- **Quality Construction**
Anodized aluminum extrusions, stainless steel, and 1/4" tempered glass combine to give you an attractive window that not only enhances most building exteriors, but will not rust, pit or weather. Track free bottom sill provides for a contaminant free surface.
- **Fully Assembled, Ready to Install**
Ready Access windows are shipped completely preassembled, and fully glazed for lower installation costs. Normal installation takes less than two hours.
- **Security**
Three separate interior slide locks are provided to prevent outside operation..



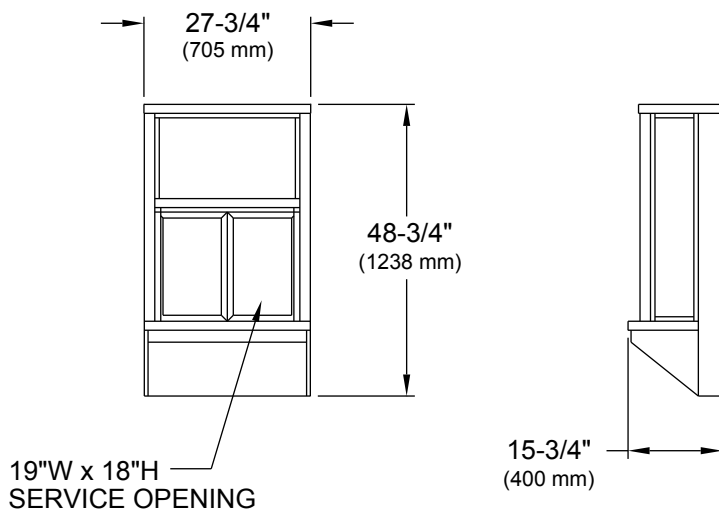
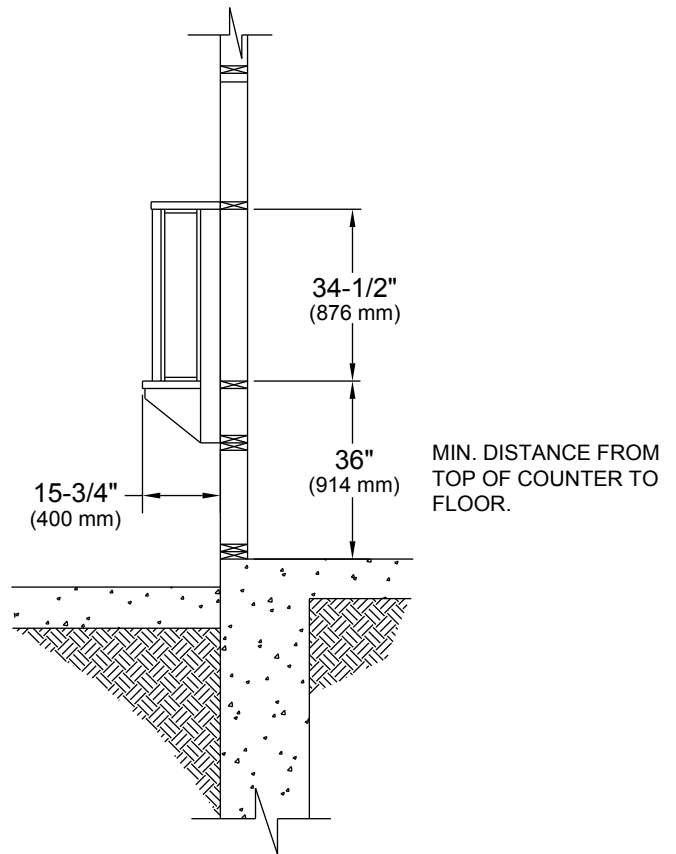
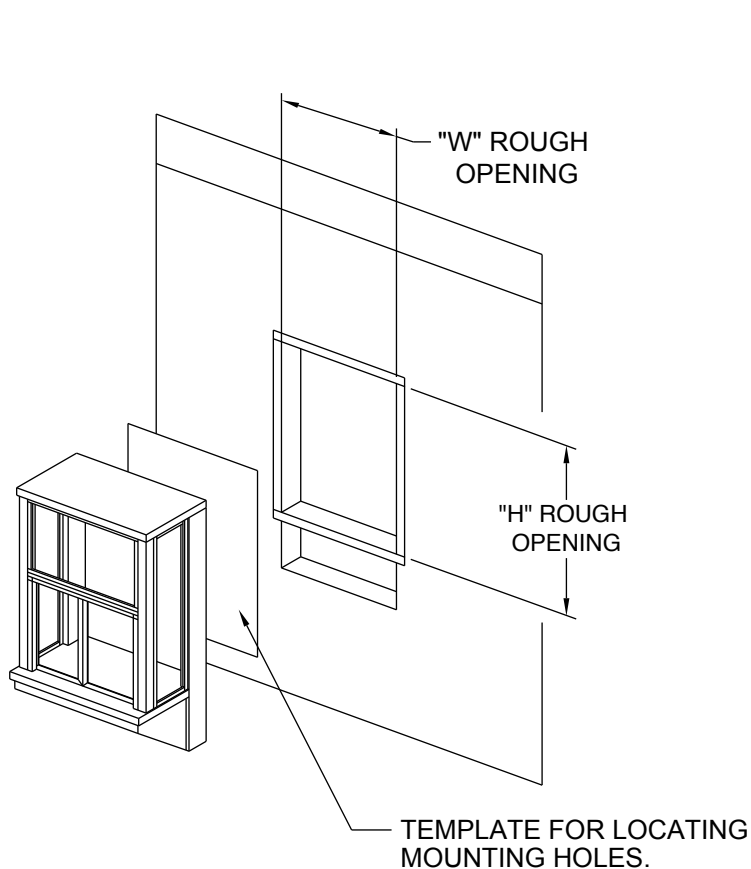
- **Warranty and Service Support**
Your Ready Access window comes with a one year limited warranty on parts and labor. In addition, each window is backed by a world wide service organization
- **SEMI-AUTOMATIC OR FULLY AUTOMATIC OPERATION**
 - Semi-Automatic**
As the operator leans forward against the padded plunger, the two door panels conveniently fold inward to open. The two door panels close when the plunger is released. A retro-fit kit is also available to convert semi-automatic models into fully-automatic units.
 - Fully-Automatic**
The operator simply steps into and breaks an electronic light beam which opens the door panels automatically. The door panels automatically close when the operator steps away from the electronic light beam.
- **AVAILABLE OPTIONS**
 - The Bump-out 2 is available in statuary bronze or clear anodized aluminum.
 - Tinted glass is available upon request.
 - Powder coat painting is available in a wide range of custom colors.

ARRIVES READY FOR INSTALLATION

Your Ready Access window is shipped completely assembled and ready for installation. Comes with instructions.

BUMP-OUT 2 BI-PARTING WINDOW

Semi-automatic operation or Fully-automatic operation



BUMP-OUT 2 ROUGH OPENINGS

Glazing Rough Opening =
24-1/4"W (616 mm) x 34-1/2"H (876 mm)
Masonry Rough Opening =
28-1/4"W (718 mm) x 49-1/4"H (1251 mm)

ELECTRICAL REQUIREMENTS

USA (DOMESTIC) : 115 vac - 60 Hz
WITH A 15 amp
BRANCH CIRCUIT

INTERNATIONAL : 220/240 vac - 50/60 Hz
WITH A MAX. 8 amp
BRANCH CIRCUIT

Window must be installed square and plumb.

Installation illustrations are for reference only. Construction and local codes will determine proper installation of window.

Contact Ready Access for more information on installation.



SECTION 08400- ALUMINUM ENTRANCES AND STOREFRONTS

PART 1-

1. GENERAL

1.01 Description:

A Work Included: Aluminum Doors and Storefront Frames.

1.02 Quality Assurance:

A For installation, use only personnel who are skilled in the work required.

B Codes and Standards for Glazing:

- 1) Comply with building codes and regulations.
- 2) Comply with Federal Safety Standard 16 CFR 1201.

1.03 Submittals: Not required.

1.04 Product Handling:

A Protection:

- 1) Protect all items before, during and after installation.
- 2) Protect installed work of other trades.

B Replacements: In event of damage, make necessary replacements.

1.05 Structural Performance

- 1) Shape and thickness of framing members shall be sufficient to withstand the design wind load for the area of the building and a blast load of 144 psf with a deflection of not more than 1/175 times the length of the member for wind loading and 1/160 times the length of the member for blast loading and a safety factor of not less than 1.65. Provide glazing beads, molding and trim of not less than 0.050 inch nominal thickness.

1.06 Water Penetration

- 1) When tested in accordance with ASTM E331, there shall be no water penetration at a pressure of 8 psf of fixture area.

PART 2-

2. PRODUCTS

2.01 Acceptable Manufacturers: Kawaneer Co., Vistawall or equal for manual doors or as required by Owner.

2.02 Material:

- A Entrances and Storefronts: Kawneer Trifab 450, 1 3/4" x 4 1/2", Kynar 500 finish or as required to meet Structural Performance standards.
 - 1) Hardware to be provided by door manufacturer. Provide deadlocks and flush bolts where indicated on Finish Hardware Schedule, refer to Section 08710.
 - 2) Provide aluminum threshold, Mill Finish, and pile or neoprene weather-stripping at head, jambs, meeting and threshold at exterior doors only.
 - 1) See Section 08800 for storefront and entrance glazing.
 - 2) Swing door type to be Kawneer 190 Narrow Stile.
 - 3) Provide manufacturer's standard medium bronze, unless adjacent storefront finish is different.

3. PART 3-
EXECUTION

3.01 Surface Conditions:

A Inspection:

- 1) Inspect installed work of other trades and verify that such work is complete to a point where this work may commence.
- 2) Verify that installation may be made in accordance with approved Shop Drawings and manufacturer's instructions.

B Discrepancies:

- 1) In event of discrepancy, notify Contracting Officer.
- 2) Do not proceed with installation until discrepancies have been resolved.

3.02 Installation:

- A Install where indicated, anchoring all components firmly in place in complete accordance with approved Shop Drawings and the manufacturer's recommendations.

3.03 Adjustment and Cleaning:

- A After completion of required work, clean all exposed surfaces. Adjust and lubricate hardware for proper operation and repair or replace damaged or defective work as directed.

END OF SECTION 08400